

Balıkesir Municipality Service Building

Balıkesir, Turkey
Martı D Mimarlık

INFO

Project is designed as an urban park for new city center located on a flat terrain on top of a sloping hill. The project area will develop as a highly populated residential and commercial district. Municipality building is designed to create an urban park. For this reason, it is embedded in topography.

A pedestrian axis from south to north, passes through the building and ends with an observation deck. Main entrance, personal entrance is placed on this axis and two municipality blocks are located two sides of it. Administrative and municipality offices are placed in these blocks.

Another axis on east-west direction connects urban park at upper level, to the pedestrian axis between municipality blocks and designed as an amphitheater. This alternative axis is defined by another block. Social units such as conference hall, library, daycare center, cafe and parliament is located in it.



Name: Balıkesir Municipality Service Building
Date: 2019
Program: Urban
Project Team: Metin Kılıç (Architect), Dürri Sürer (Architect), Deniz Güner (Architect), Ali Can Helvacıoğlu (Architect), Consultant: Cemal Çoşak (Civil Engineer), İpek Kaştaş Utun (Landscape Architect) Assistants: Özcan Yavuz (Architect), Abdurrahman Döken (Architecture Student), Diclehan Bakır (Architecture Student)
Size area: 39,836m²
Location: Balıkesir, Turkey

0516 **ADVANCED ARCHITECTURE 5**

SITE ANALYSIS

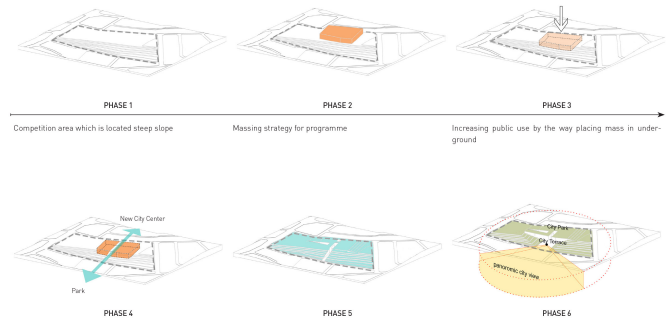


Existing City Fabric - Project Location

Existing Green Area and Roads

Proposal Green Area and Roads

PROCESS DIAGRAM



Competition area which is located steep slope

Massing strategy for programme

Increasing public use by the way placing mass in underground

New City Center
Park

PHASE 4

PHASE 5

PHASE 6

To create an axis(street) which links residential area and park

To create different public space in different levels

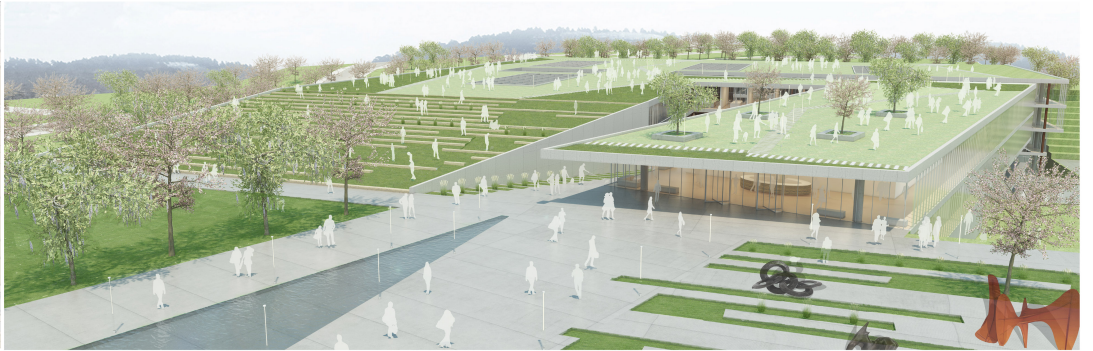
City Park is placed on upper level of building and is created an axis which is covered City Terrace

LANDSCAPE & MASTER PLAN 0517

SITE PLAN



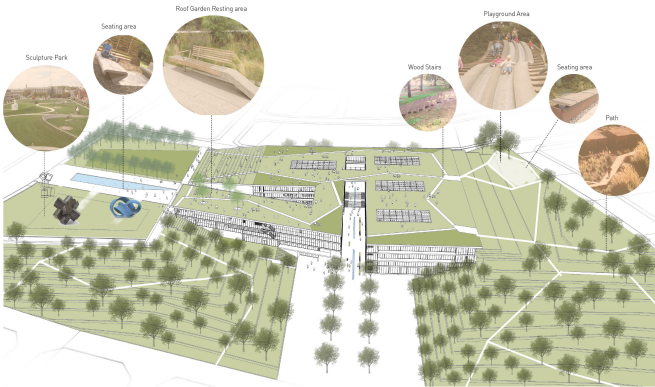
BIRD EYE-VIEW



SITE PLAN



Birch, Jade vine, Almond, Blue ficus, Cordyline
 georgiana, Hibiscus, Penstemon
 detersum



FLOOR PLAN

