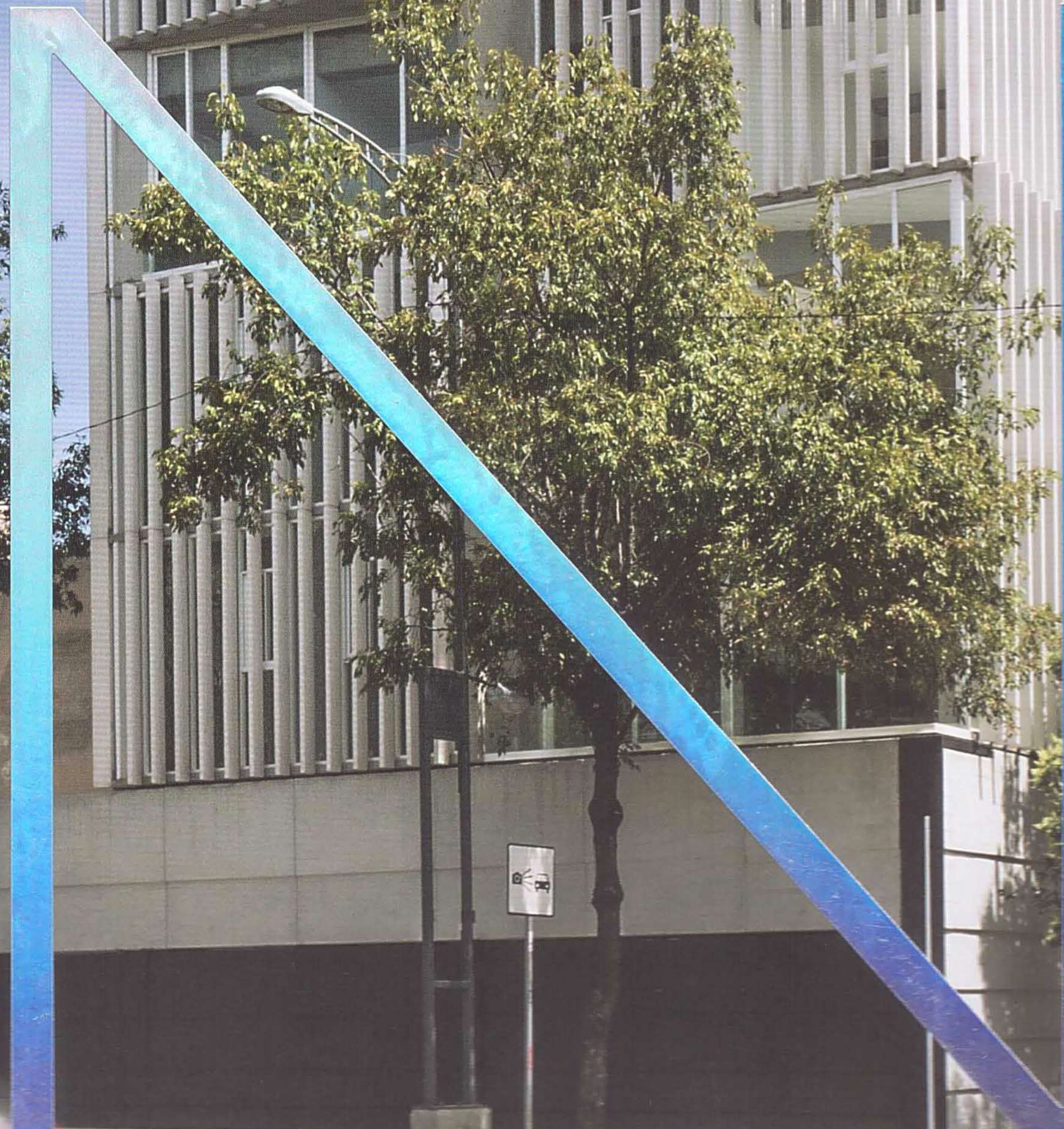


M I N I - B U I L D I N G





IZMIR CHAMBER OF GEOLOGICAL ENGINEERS BUILDING

ARCHITECT : M ARTI D MIMARLIK / METIN KILIÇ, DÜRRİN SÜER

IZMIR CHAMBER OF GEOLOGICAL Engineers Building has been designed on an attached parcel with 6.65m facade, which is located on a slightly narrow street. 5-story building had been designed to have united composition, containing a library, cafeteria, meeting room and workspaces, at first drafts due to administration's demands. However, administration had changed their opinion because of managing concerns. A building with cafeteria at ground floor, 4 independent office floor connected by a circulation core was planned for final design.

Floor area is 75m², in order to maximize limited office area, circulation core is located at the back edge of the parcel. North facade is the only facade enables users to interact with the street and also it is the only one where natural light can be taken. For this reason it is designed as a relief that reflects relation between occupation of users and topography. Geometrical characteristic of relief facade provides dynamic effects to interiors due to different light refracitons.

이즈미르 지질공학 연구센터는 좁은 골목 한 켠에 서 있는 건물이다. 필지 합병으로 너비 6.65m 정도 되는 토지에 계획된 이 5층짜리 건물은 행정관리부 측에서 처음 요구한 대로 도서관과 카페, 회의실, 업무공간을 비롯해 여러 공간으로 구성됐었다. 하지만 관리 문제로 의견을 바꿔 최종적으로 1층에는 카페가 들어서고, 중심 동선으로 연결되는 나머지 네 개 층은 사무실로 사용하도록 결정되었다.

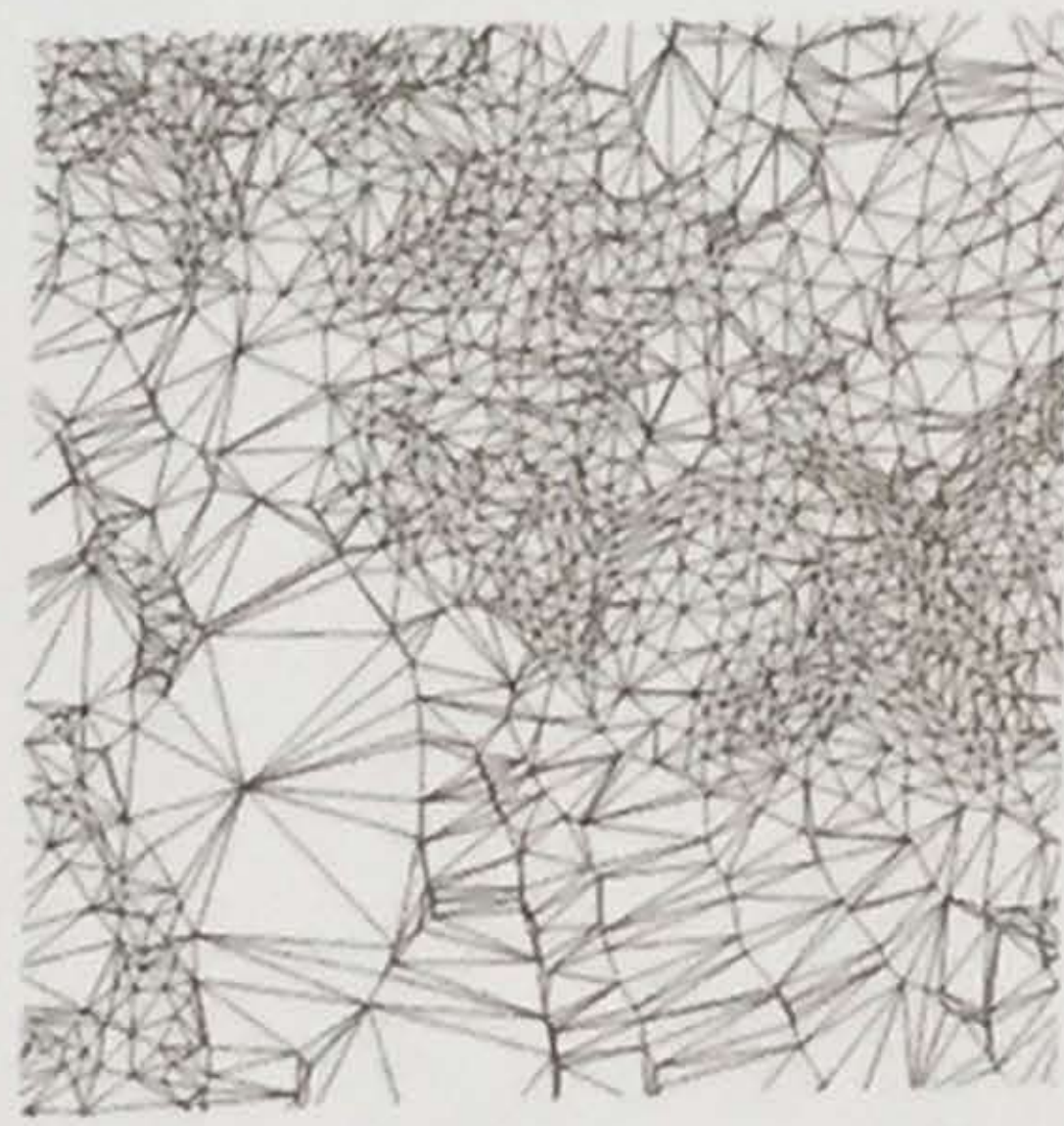
층 면적이 75m²밖에 되지 않았으므로 제한된 평면을 최대한 활용하고자 중심 동선을 뒤쪽에 배치했다. 사용자가 거리를 내려다볼 수 있는 면은 북측이 유일했고, 해가 들어오는 방향 역시 북향이 유일했다. 이러한 이유로 생활하는 사용자와 지형 조건 사이의 관계가 입면 디자인에 반영되었다. 기하학적 특성이 돋보이는 입면은 여러 방향으로 빛을 반사하여 실내에 다양한 효과를 준다.

Location Izmir, Turkey **Use** Office **Site area** 106,7m² **Building area** 83.6m² **Gross floor area** 428m² **Completion** 2017
Architectural design Metin Kılıç, Dürrin Süer **Project team** Utkan Emek Seçgin, Ali Can Helvacioğlu, Nur Kaplan **Structural project** Cemal Coşak, Mustafa Şahin **Mechanical project** Ekrem Evren **Electrical project** Namık Onmuş **Photographs** ZM Yasa Photography

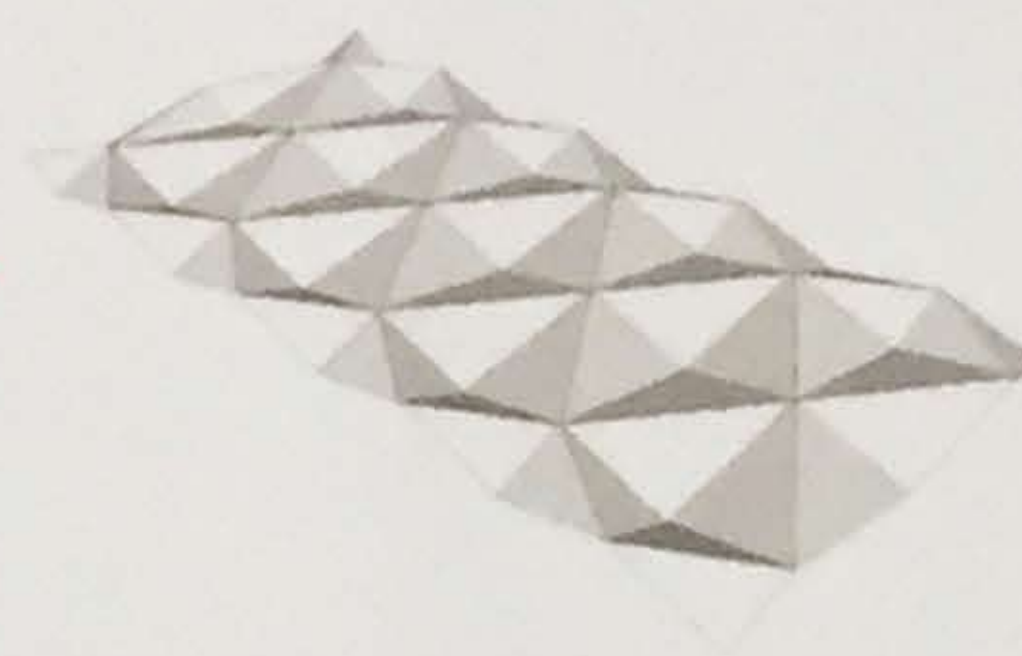
위치 터키 이즈미르 용도 업무 대지면적 106,7㎡ 건축면적 83,6㎡ 연면적 428㎡ 완공 2017 설계 M+D 건축 / 메틴 클루치, 두린 수에르 사진 ZM 야사 포토그래피



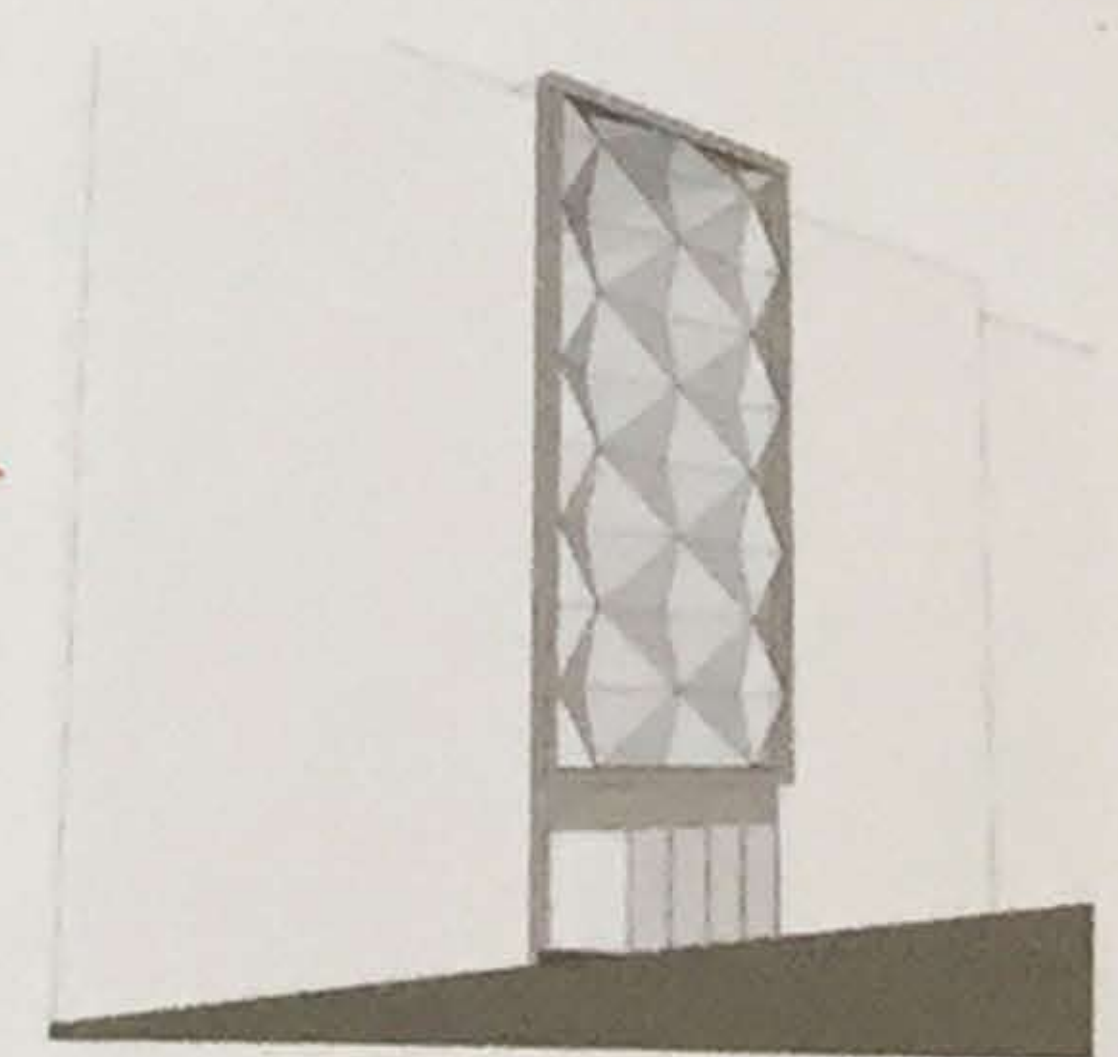
Elevation curves



Topographical triangulation



Triangulation based facade scheme

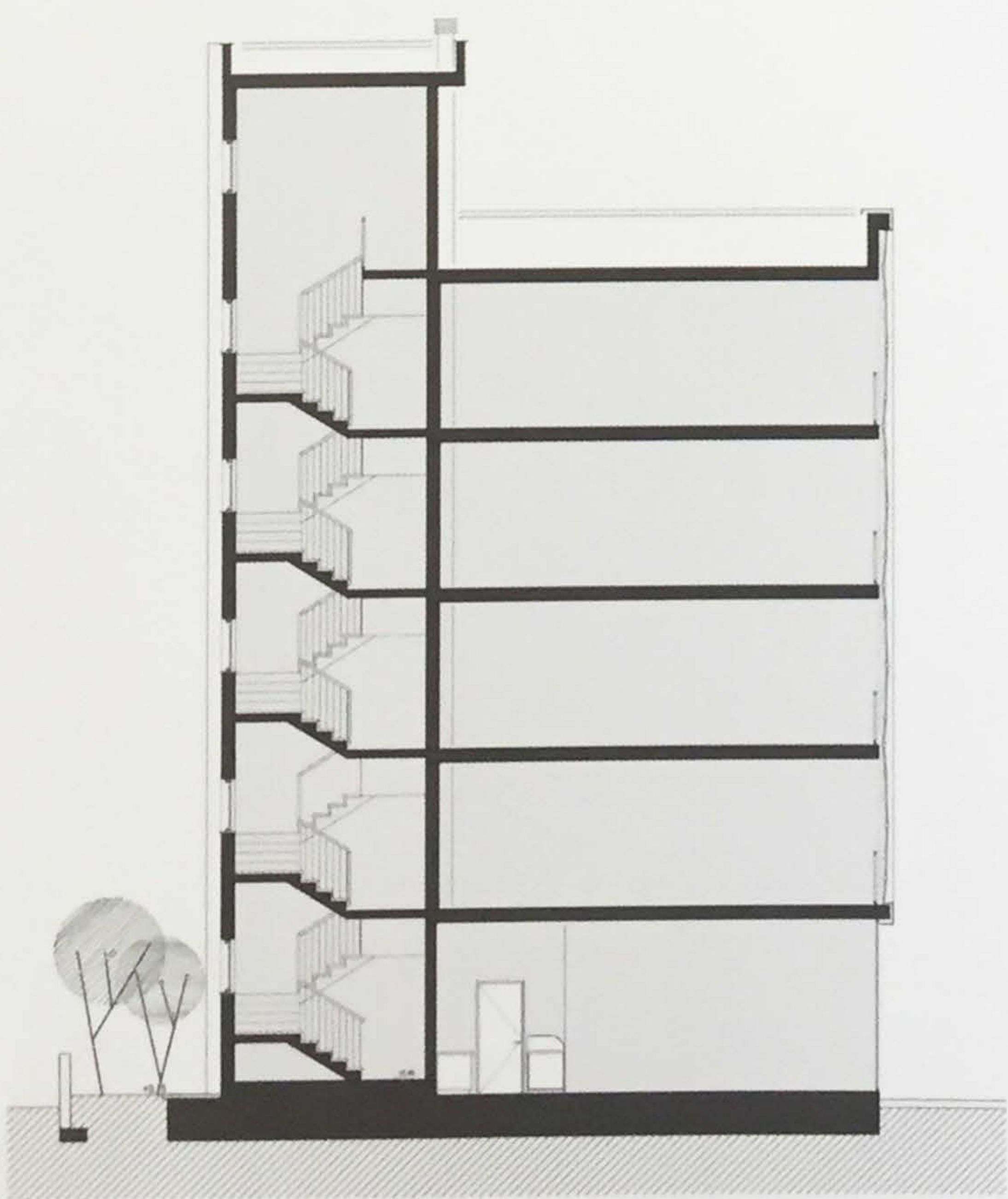


Triangulation based facade scheme

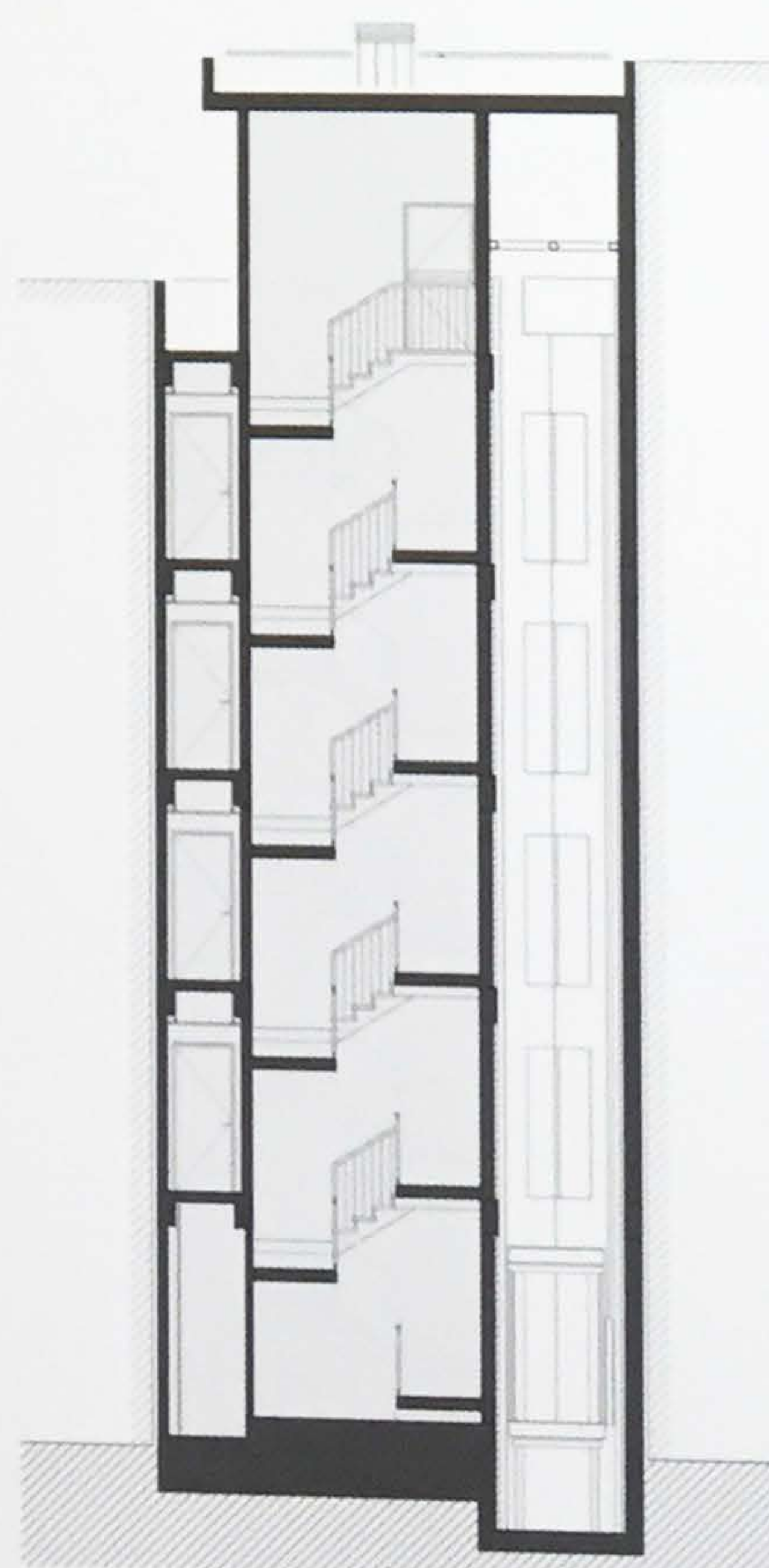
FACADE DESIGN DEVELOPMENT



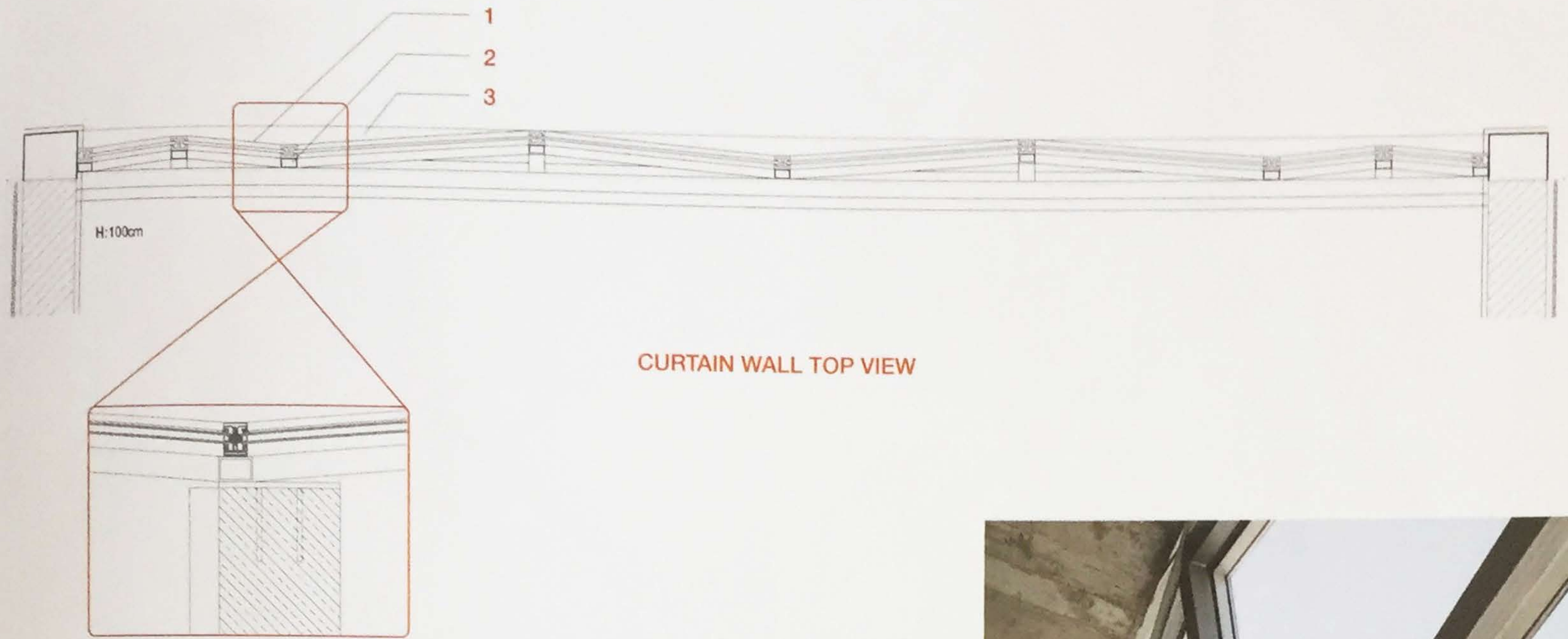
— Street view at night — Front facade □ Curtain wall detail ◁ Curtain wall detail



LONGITUDINAL SECTION

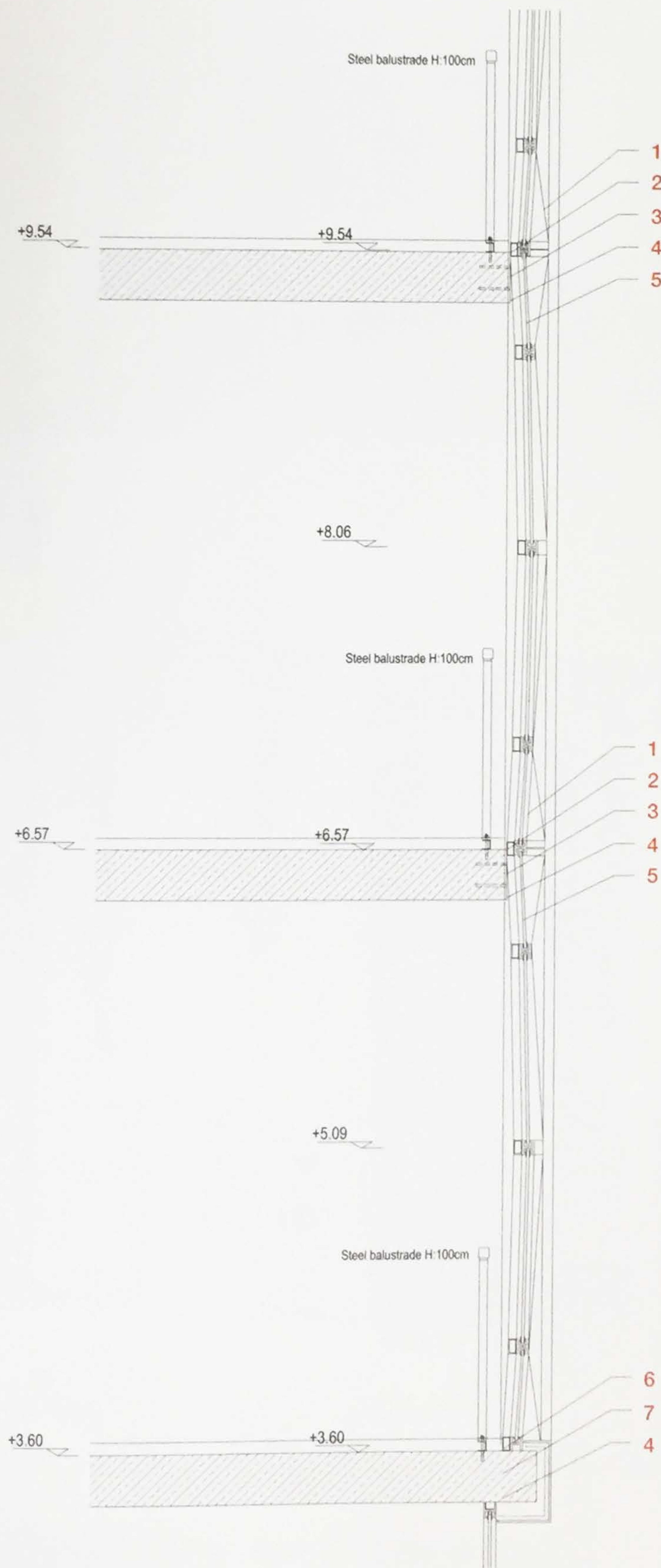


CROSS SECTION

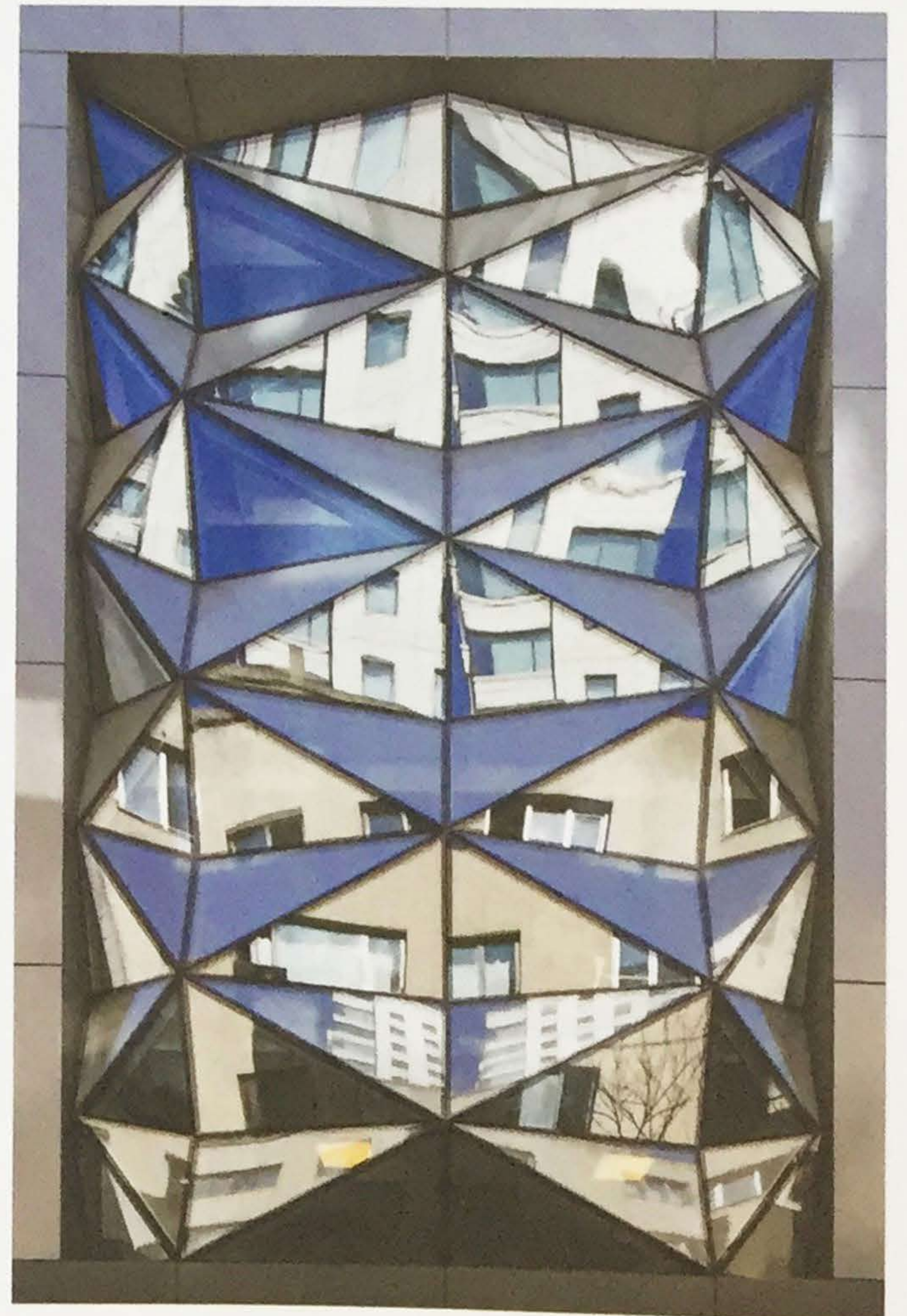


CURTAIN WALL TOP VIEW

- 1 HEAT-INSULATED ALUMINUM FACADE PROFILE + DOUBLE GLAZING
- 2 50X70X4 STEEL RECTANGULAR HOLLOW SECTION FRAME
- 3 T12 STEEL ANCHORAGE PLATE
- 4 REINFORCED CONCRETE FLOOR
- 5 FIRE-PROOF LAMINATED GLASS
- 6 ALUMINUM COMPOSITE PLATE
- 7 XPS HEAT INSULATION



CURTAIN WALL SECTION





↑ Office | Office

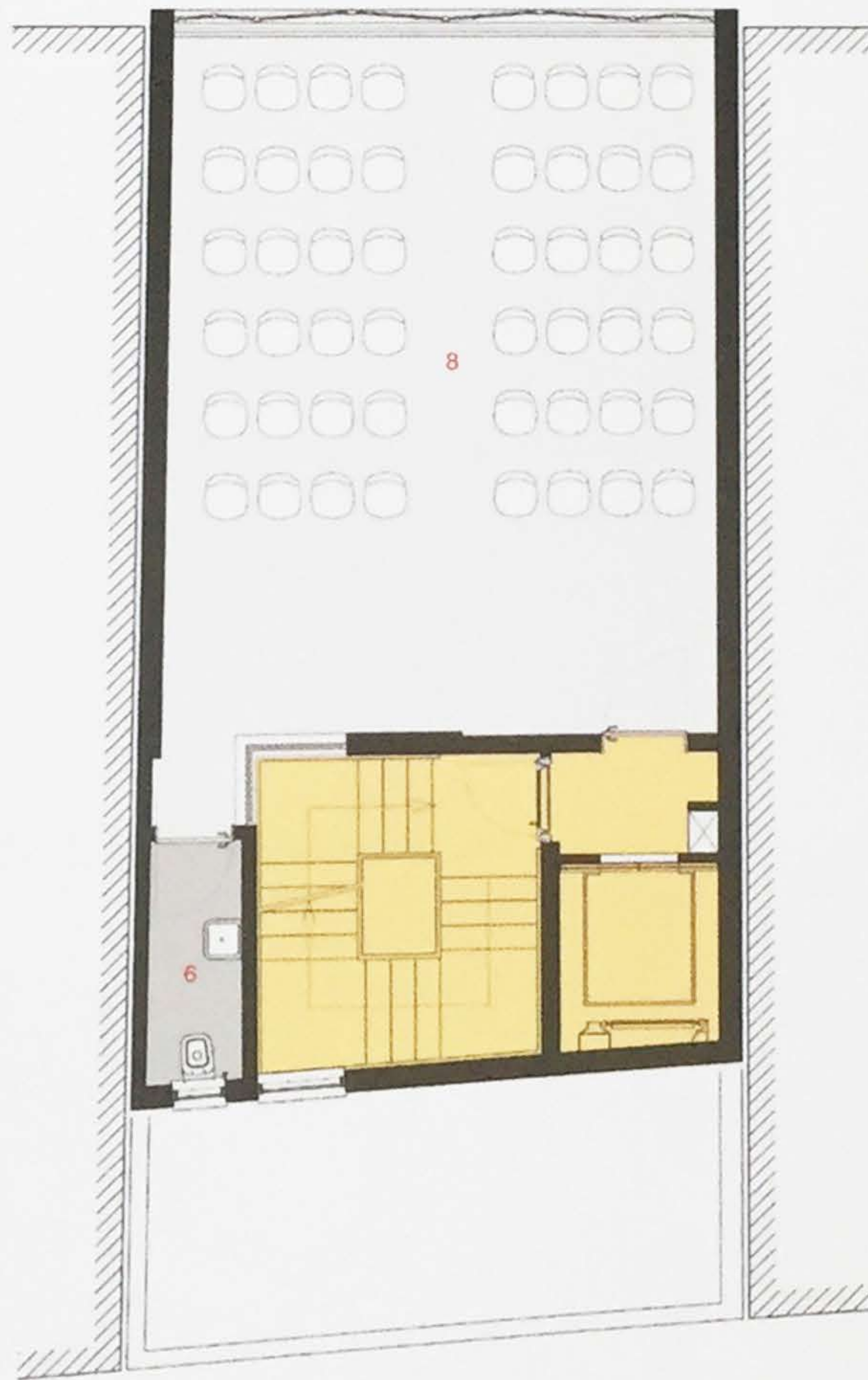


GROUND FLOOR PLAN



↑ Meeting room

- 1 CAFE ENTRANCE
- 2 BUILDING ENTRANCE
- 3 CAFE
- 4 KITCHEN
- 5 CORRIDOR
- 6 RESTROOM
- 7 DEPOT
- 8 MEETING ROOM
- 9 OFFICE



1ST FLOOR PLAN



2ND~4TH FLOOR PLAN